

1 2 3 4 5 6 7 8

REV	LOCATIONS	DESCRIPTION	DATE	REVISER	APPD

A

B

C

D

E

F

A

B

C

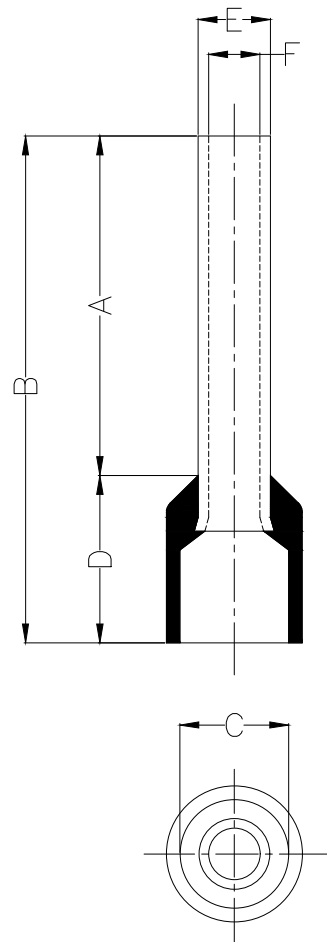
D

E

F

Notes:

Material: Copper  
 Insulator: PVC (UL 94V-0)  
 Plating: Bright tin plated  
 Maximum temperature: 75 °C  
 Maximum electrical rating: 600V  
 Wire range: 1.5mm<sup>2</sup>/ (16AWG)



Dimensions					
A	B	C	D	E	F
±1	±1	±0.5	±1	±0.5	±0.5
8.5	15.0	3.5	6.5	1.9	1.7

PART NO.	Color Of Insulator
FET02-001500800ARD8	Red
FET02-001500800ABU8	Blue
FET02-001500800ABK8	Black
FET02-001500800AWH8	White
FET02-001500800AGY8	Gray

THIRD ANGLE PROJECTION

DESIGN UNITS  
 mm

SCALE: 5:1    SIZE: A4

GENERAL TOLERANCES (UNLESS SPECIFIED)	
X. ±0.30	X.* ±5'
X.X ±0.20	X.X' ±2'
X.XX ±0.15	X.XX' ±1'
X.XXX ±0.10	X.XXX' ±0.5'

APPROVE BY LEO	DATE 19/JAN/21
CHECKED BY GISELLE	DATE 19/JAN/21
DRAWN BY PYD	DATE 19/JAN/21

PART NO. FET02-001500800AXX8	ITEM NO. FET02
TITLE Cord end terminal	
THIS DRAWING CONTAINS INFORMATION THAT IS PROPRIETARY TO TXGA INDUSTRIAL ELECTRONICS(S.Z)CO.,LTD AND SHOULD NOT BE USED WITHOUT WRITTEN PERMISSION	

Building Technology Cornerstone

REV 0    SHEET NO. 1/1

1 2 3 4 5 6 7 8